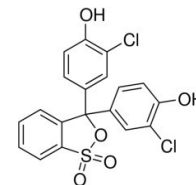




CHLORO PHENOL RED INDICATOR AR

PRODUCT CODE	R05020
SYNONYMS	--
C.I. NO.	--
CASR NO.	4430-20-0
ATOMIC OR MOLECULAR FORMULA	C₁₉H₁₂Cl₂O₅S
ATOMIC OR MOLECULAR WEIGHT	423.28
PROPERTIES	--
PARAMETER	LIMIT
Description	Green to very dark green powder/crystals/granules.
Solubility	1% solution in 95% alcohol is a clear solution.
Wavelength in 0.1 N NaOH Extinction coefficient in 0.1 N NaOH	573-579 nm ≥45000
Wavelength in 0.1 N NaOH Extinction coefficient in 0.1 N NaOH	368-374 nm ≥5000
Wavelength in 0.1 N NaOH Extinction coefficient in 0.1 N NaOH	295-301 nm ≥12000
Visual interval(pH 4.8)	Yellow
Visual interval(pH 6.4)	Purple
Note(s): Assay (if applicable) method mentioned.	
WARNING	IMDG Code : --
Hazard statements: Not hazardous. No hazards.	UN No. : --
Precautionary statements	IATA : --
Prevention: -----	
Response: -----	
Disposal: -----	
Hazard Pictogram(s) :-----	
 GHS05 GHS07	



Replace Date-17-June-2023